

# ICED-9521, DLED-9521

2" IC and Non-IC type Round Architectural LED

Catalog #		Type
Project		Date
Prepared by		

**2" Architectural LED**



**DESCRIPTION**

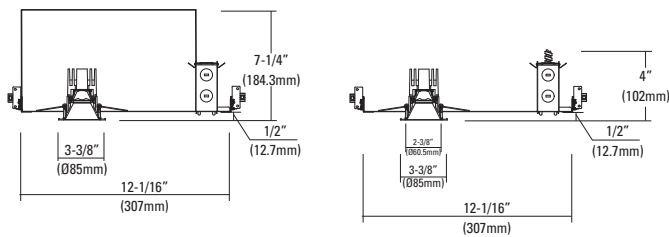
2inch downlight provides a shallow ceiling application in IC and Non-IC circumstance. Retrofit design of the fixture allows easy installation for IC and Non-IC frame, and also the retrofit mounting to direct ceiling with its mouse-trap spring.

**FEATURES and FUNCTIONS**

- Interchangeable beam distribution by different beam spread from inner optic.
- Ceiling thickness allow 1/2".
- Adjustable trims may be directional 0~30° tilt and 356 degree rotational precisely adjustment with position lock.
- High efficiency center beam options.
- 24" Bar Hangers provide stability and support on joists and T-Bar Grid ceilings. Optionally use C-channel bracket.
- 120V~277V 60Hz Triac and 0-10V dimmable driver for most dimmers in the market.

[IC : (ICED)]

[Non-IC : (DLED)]



**Mounting Frame :** 12-1/16" (307mm) X 7-1/4" (184.3mm)  
**Ceiling Cut-out :** Ø2-7/8" (Ø72mm)

SPECIFICATION			
LED Quantity	1EA (COB)		
Input Voltage	120V-277V AC		
Wattage (+/-5%)	<b>10W</b>	<b>14W</b>	<b>23W</b>
Lumen (+/-5%)	950	1,355	1,710
Efficacy (LPW)	95 lm/W	96 lm/W	74 lm/W
CRI (Typical)	80, 90		
Color (+/-5%)	2700K, 3000K, 3500K, 4000K, 5000K		
Dimming	Triac & 0-10V the both (Consult with factory for approved dimmers)		

\*\*23W : Non-IC only

**Trims** Various trims for straight down lights (-ST), Adjustable (-AJ), Wall wash(-WW)

\*Optional flangeless trims available



**TML-112R-ST**

- Straight reflector.



**TML-112R-WW**

- Wall wash reflector.



**TML-112R-AJ**

30° Angle accurately aiming for vertical surface through aperture from below ceiling, and 350° rotating.

**Listing**

- CSA-us Certificated
- State of california Title 24
- Energy star Approved & Listed

**Warranty**

- 5years of lamp life.

**ORDERING INFORMATION**

Housing	Watts	CRI	CCT	Trims	Reflector Finish	Trim Finish	Beam Angle
<b>IC : ICED-9521</b>	<b>10</b> 10W	<b>8</b> 80	<b>27</b> 2700K	<b>ST</b> Straight, TML-112R-ST	<b>CL</b> Clear	<b>WH</b> White	<b>N</b> Narrow
<b>Non-IC : DLED-9521</b>	<b>14</b> 14W	<b>9</b> 90	<b>30</b> 3000K	<b>WW</b> Wall wash, TML-112R-WW	<b>HC</b> Haze Clear	<b>BK</b> Black	<b>M</b> Medium
	<b>23</b> 23W		<b>35</b> 3500K	<b>AJ</b> Adjustable, TML-112R-AJ	<b>WH</b> White	<b>CH</b> Chrome	<b>W</b> Wide
			<b>40</b> 4000K	<b>TRL2</b> Round Trimless Trim	<b>GD</b> Gold		
			<b>50</b> 5000K				
*Option(EM only for Non-IC) - EM=Emergency battery backup				*Consult with factory for custom finishes			

Example : ICED-9521-10-830

[ ] - [ ] - [ ]

Example : ST-CL-WH-W

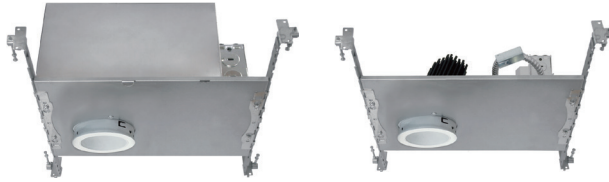
[ ] - [ ] - [ ] - [ ]

# ICED-9535, DLED-9535

## 3.5" IC and Non-IC type Round Architectural LED

Catalog #		Type
Project		Date
Prepared by		

### 3.5" Architectural LED



**ICED-9535**  
[IC Rated]

**DLED-9535**  
[Non-IC Rated]

#### DESCRIPTION

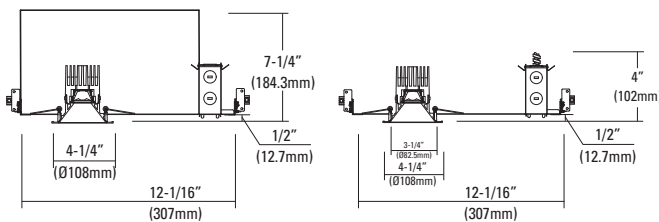
3.5" downlight provides a shallow ceiling application in IC and Non-IC circumstance. Retrofit design of the fixture allows easy installation for IC and Non-IC frame, and also the retrofit mounting to direct ceiling with its mouse-trap spring.

#### FEATURES and FUNCTIONS

- Interchangeable beam distribution by different beam spread from inner optic.
- Ceiling thickness allow 1/2".
- Adjustable trims may be directional 0~30° tilt and 356 degree rotational precisely adjustment with position lock.
- High efficiency center beam options.
- 24" Bar Hangers provide stability and support on joists and T-Bar Grid ceilings. Optionally use C-channel bracket.
- 120V~277V 60Hz Triac and 0-10V dimmable driver for most dimmers in the market.

[IC : (ICED)]

[Non-IC : (DLED)]



Ceiling Cut-out : Ø4-1/16" (Ø102mm)

Mounting Frame : 12-1/8" (307.3mm) X 7-5/8" (193.8mm)

SPECIFICATION			
LED Quantity	1EA (COB)		
Input Voltage	120V-277V AC		
Wattage (+/-5%)	<b>10W</b>	<b>14W</b>	<b>23W</b>
Lumen (+/-5%)	950	1,355	1,710
Efficacy (LPW)	95 lm/W	96 lm/W	74 lm/W
CRI (Typical)	80, 90		
Color (+/-5%)	2700K, 3000K, 3500K, 4000K, 5000K		
Dimming	Triac & 0-10V the both (Consult with factory for approved dimmers)		

\*\*23W : Non-IC only

**Trims** Various trims for straight down lights (-ST), Adjustable (-AJ), Wall wash(-WW)

\*Optional flangeless trims available



**TML-324R-ST**

- Straight reflector.



**TML-324R-WW**

- Wall wash reflector.



**TML-324R-AJ**

30° Angle accurately aiming for vertical surface through aperture from below ceiling, and 350° rotating.

#### Listing

- CSA-us Certificated
- State of california Title 24
- Energy star Approved & Listed

#### Warranty

- 5years of lamp life.

#### ORDERING INFORMATION

Housing	Watts	CRI	CCT	Trims	Reflector Finish	Trim Finish	Beam Angle
<b>IC : ICED-9535</b>	<b>10</b> 10W	<b>8</b> 80	<b>27</b> 2700K	<b>ST</b> Straight, TML-112R-ST	<b>CL</b> Clear	<b>WH</b> White	<b>N</b> Narrow
<b>Non-IC : DLED-9535</b>	<b>14</b> 14W	<b>9</b> 90	<b>30</b> 3000K	<b>WW</b> Wall wash, TML-112R-WW	<b>HC</b> Haze Clear	<b>BK</b> Black	<b>M</b> Medium
	<b>23</b> 23W		<b>35</b> 3500K	<b>AJ</b> Adjustable, TML-112R-AJ	<b>WH</b> White	<b>CH</b> Chrome	<b>W</b> Wide
			<b>40</b> 4000K	<b>TRL3</b> Round Trimless Trim	<b>GD</b> Gold		
			<b>50</b> 5000K				
*Option(EM only for Non-IC) - EM=Emergency battery backup				*Consult with factory for custom finishes			

Example : ICED-9535-10-830

[ ] - [ ] - [ ]

Example : ST-CL-WH-W

[ ] - [ ] - [ ] - [ ]